

Public Document Pack



BROMSGROVE DISTRICT COUNCIL

MEETING OF THE PLANNING COMMITTEE

TUESDAY 10TH DECEMBER 2024, AT 6.00 P.M.

PARKSIDE SUITE - PARKSIDE

SUPPLEMENTARY DOCUMENTATION

The attached papers include an updated Officer presentation as the previously distributed version contained errors in some of its images.

6. 24/00229/FUL - Retention of 13 storage containers (and hardstanding). Land at Backlane Farm, St Kenelms Road, Romsley, Worcestershire B62 0PG. Mr. M. Hodgetts (Pages 3 - 10)

S. Hanley
Chief Executive

Parkside
Market Street
BROMSGROVE
Worcestershire
B61 8DA

10th December 2024

This page is intentionally left blank

24/00229/FUL

Land At, Backlane Farm St Kenelms Road Romsley
Worcestershire B62 0PG

Retention of 13 storage containers (and hardstanding)

Recommendation: Refuse

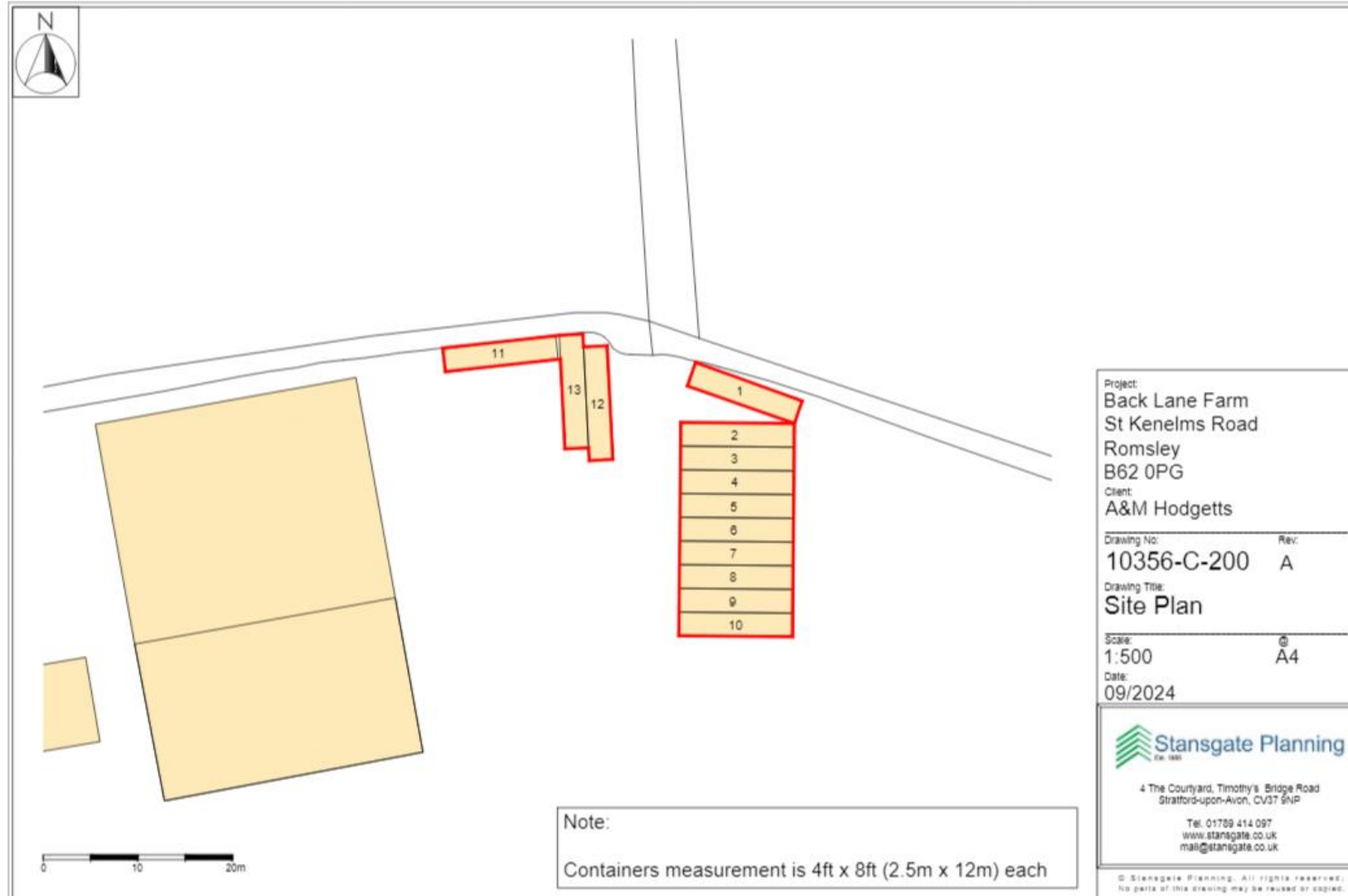
Site Location Plan



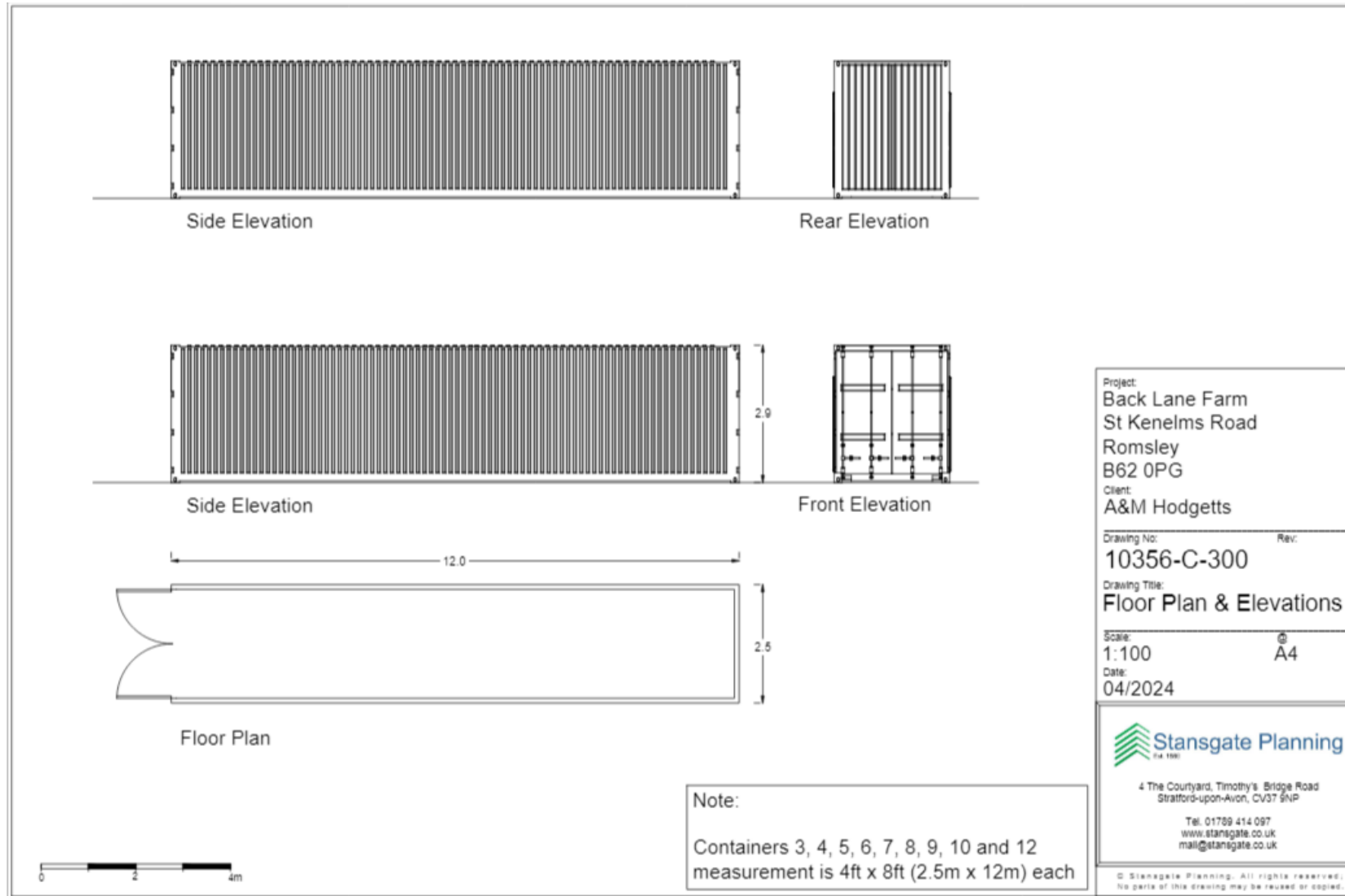
Aerial Image



Site Plan



Proposed Container Elevations and Floorplan



Site Photos

Page 8



Compound entrance looking East



Containers 1 – 10 looking NE

Agenda Item 6

Site Photos



Containers 11 – 13 looking NW



Containers 11 – 13 looking North

This page is intentionally left blank